



## 2021 MEDIA REFERENCE GUIDE



## OUR MISSION

---

TO IMPROVE EDUCATIONAL OPPORTUNITIES FOR **EVERY CHILD IN ALAMANCE COUNTY** BY CONNECTING COMMUNITY MEMBERS TO DEVELOP SOLUTIONS TOGETHER.

### WHO WE ARE

Alamance Achieves is **focused on improving educational outcomes** for Alamance County’s children by building connections. Alamance Achieves connects people who have a need with others in the community that can help develop a solution to address that need. Alamance Achieves doesn’t own the results — **the results belong to the community.**



1. STRENGTHEN LEARNING OPPORTUNITIES THAT MAKE UP THE ALAMANCE ACHIEVEMENT GRID.



2. COLLABORATE WITH THE COMMUNITY TO DEVELOP SHARED GOALS AND IDENTIFY ROOT CAUSES OF ISSUES.



3. USE DATA TO ILLUMINATE AREAS OF OPPORTUNITY AND ALIGN EXISTING LOCAL EFFORTS.



4. TEST PROGRAMS AND WORK TO EXPAND THEM IF THEY SHOW PROMISE.

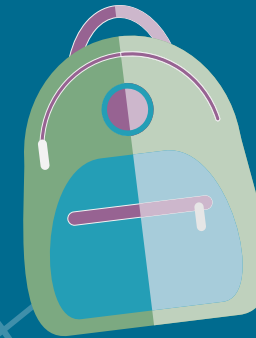
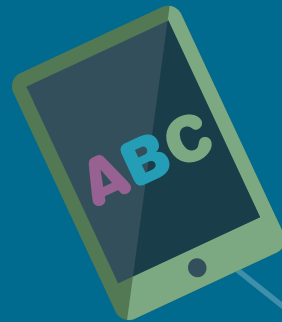


# OUR GOALS

CREATING A RELIABLE GRID OF RESOURCES OR CHARGING STATIONS THAT CAN **POWER THE ACHIEVEMENT** OF ALAMANCE COUNTY'S CHILDREN.

## KINDERGARTEN READINESS

Ensuring every child is **well, healthy** and **ready** to take advantage of educational opportunities.



## CAREER SUCCESS

Making sure all of Alamance County's children have **access to opportunities** to achieve career goals.



## ACADEMIC PROGRESS

Helping all children access our community's **grid of resources**.



## HIGH SCHOOL GRADUATION

Energizing these **charging stations** to make sure all kids are ready for post-secondary learning.

## OUR DIFFERENCE

---

EVERYONE IN ALAMANCE COUNTY **OWNS THE WORK** ALAMANCE ACHIEVES DOES, WHICH IS FOCUSED ON SUPPORTING CHILDREN FROM CRADLE TO CAREER.

### SHARED RESPONSIBILITY

Alamance Achieves is committed to data-informed system change, equity and continuous improvement. We do this by making the most of data to help us make strategic, aligned decisions about policies and programs that support the specific needs of specific neighborhoods. We do this by connecting groups to facilitate, strengthen and improve access to educational opportunities for all Alamance County children, so every child has the best chance to succeed, which helps our entire community thrive.

We all share the responsibility of improving outcomes for children. But it will take all of us, working together as equal partners, to achieve our goal of a thriving Alamance County. Some of our efforts are centered on generational change. Some provide solutions for today's students. But for all of it, we can achieve this vision, together. It will take time, but it's possible. It will take the entire community, and we can do it.

## OUR STAFF

---

FROM **EDUCATION EXPERTS TO COMMUNITY VOICES**,  
ALAMANCE ACHIEVES WORKS WITH ALL TO SHAPE  
ALAMANCE COUNTY'S FUTURE.

### CREATING EQUITY IN THE COMMUNITY

With an undergraduate degree in criminal justice from North Carolina Central University and a master's degree in education from Elon University, Tyronna Hooker came to Alamance Achieves after serving in eastern North Carolina as the managing director with Teach for America.

A native of Bladen County, Tyronna has lived in Alamance County since 1995, where she and her husband have raised their two sons, who power her commitment to creating policy and systems change to ensure that black and brown children have equitable access to education and services.



**TYRONNA HOOKER, M.ED.**  
Executive Director  
tyronna.hooker@conehealth.com

### OUR TEAM MEMBERS

The members of Alamance Achieves' staff are passionate about creating connections between members of the community to improve educational outcomes for all of Alamance County's children. Our team is committed to fostering engagement between families, students and youth, who are the experts in the solutions necessary to improve outcomes — with systems leaders, elected officials, business owners, teachers and human service providers. Working together, co-creating solutions and leveraging existing resources, we can remove the barriers that prevent children from thriving.



**LEXY ROBERTS**  
Community Engagement Manager  
lexy.roberts@conehealth.com



**ALISON HARMAN, M.S.**  
Data Manager  
alison.harman@conehealth.com



**SYLVIA ELLINGTON**  
Elon Service Year Fellow  
sylvia.ellington@conehealth.com



**LALLO YADETA**  
Elon Service Year Fellow  
lallo.yadeta@conehealth.com

# OUR PARTNERS

ALAMANCE ACHIEVES IS ALL OF US, **WORKING TOGETHER AS EQUAL PARTNERS** TOWARD THE SAME GOAL: A THRIVING ALAMANCE COUNTY.

## COMMITTEES & TEAMS



1. STEERING COMMITTEE



2. COMMUNITY TRANSFORMATION COUNCIL



3. COLLABORATIVE ACTION NETWORK



4. QUALITY MEASUREMENT COMMITTEE



5. COMMUNICATIONS TEAM



6. HEALTH TEAM



7. PARENT TEAM



8. EQUITY TEAM



9. FUNDING AND SUSTAINABILITY TEAM



10. FAITH-BASED TEAM



## RESOURCES

---

LEARN MORE ABOUT ALAMANCE ACHIEVES' GOALS AND INITIATIVES, AS WELL AS WAYS YOU CAN **GET INVOLVED TO CHANGE OUTCOMES** AND CREATE EQUITABLE RESULTS.



### ALAMANCE ACHIEVES WEBSITE

For more information about our organization, our team, events and more. [alamanceachieves.org](https://alamanceachieves.org)

### ALAMANCE ACHIEVES MEDIA CENTER

Access our latest releases, news mentions, and downloadable graphics. [alamanceachieves.org/media](https://alamanceachieves.org/media)

### OUR GOALS

Detailed background on our four benchmark focus areas. [alamanceachieves.org/key-goals](https://alamanceachieves.org/key-goals)

### PROGRESS REPORTING

Link to our Baseline Report and Annual Report updates. [alamanceachieves.org/progress](https://alamanceachieves.org/progress)

### E-NEWS UPDATES

Sign up for our email newsletter for regular updates and news. [alamanceachieves.org/get-involved](https://alamanceachieves.org/get-involved)

### STRIVETOGETHER

National nonprofit network that works to ensure every child succeeds from cradle to career. [strivetogether.org](https://strivetogether.org)

### PIEDMONT HEALTH COUNTS

Alamance, Guilford and Rockingham County health, economic and population data. [piedmonthealthcounts.org](https://piedmonthealthcounts.org)

### N.C. STATE CENTER FOR HEALTH STATISTICS

Health statistics, including county-level data, and studies and estimates. [schs.dph.ncdhs.gov/data/county.cfm](https://schs.dph.ncdhs.gov/data/county.cfm)

# MEASURING SUCCESS

OUR EFFORTS TO ENSURE THAT EVERY CHILD IN ALAMANCE COUNTY **THRIVES FROM CRADLE TO CAREER** IS BACKED BY DATA.

50%

of kindergartners **struggle** with the **transition** into school.



Students enrolled in the **Ready Freddy** reading program scored higher across all measures of kindergarten readiness.

In winter 2019, Alamance-Burlington School System (ABSS) launched a measurement tool — the **Early Development Instrument (EDI)** — across all kindergarten classrooms.



+240

**food distribution locations** were established to ensure access to healthy food for young children/students.



# TIMELINE

## THE HISTORY AND EVOLUTION BEHIND THE FOUNDING OF ALAMANCE ACHIEVES.

### 2005: Children's Oversight Executive Committee Formed

COEC is formed by Alamance County heads of public health agencies. Local education and the concept behind Collective Impact are top of mind.

**2005**  
Children's Oversight Executive Committee is formed.



**2015**  
Impact Alamance Board Retreat takes place.

### 2015: Impact Alamance Board Retreat with Strive Together

Community leaders and Strive Together learn about each other and how world-class community engagement and world-class public education goals should be achieved.

### 2016: Strive Together Retreat in Indianapolis

Strive Together's Cradle to Career model is voted to be the way forward for Alamance County.

**2016**  
Strive Together Retreat takes place.



### 2011: ABSS Vision for Public Education

ABSS creates their Vision and Strategic Plan for the education system. They invite the community to participate including members of CEOC and the Community Health Assessment team.

**2011**  
ABSS' Vision for Public Education is created.



### 2014: Impact Alamance Formed

With the merger of Cone Health and Alamance Regional Medical Center, Impact Alamance is formed. Strategic funding for public education is their top priority.

**2014**  
Impact Alamance is formed.



**2017**  
Alamance Achieves is formed.

### 2017: Alamance Achieves Formed

Alamance Achieves is formed. Committed to data-informed system change, equity and continuous improvement, they connect groups to facilitate, strengthen and improve access to educational opportunities for all.



CONTACT US TODAY

133 East Davis Street, Burlington, NC 27215 • 336.395.7021 • [AlamanceAchieves.org](http://AlamanceAchieves.org) • 